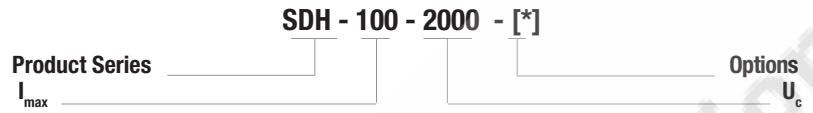
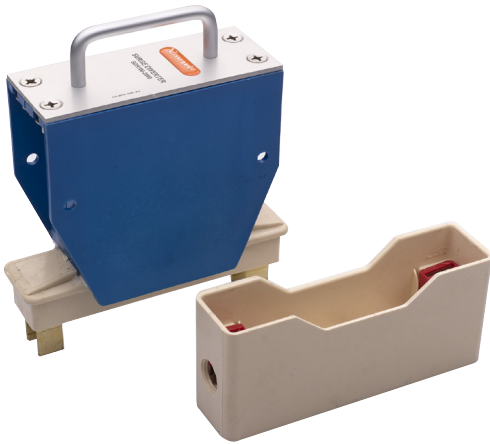


SDH High Voltage Surge Diverters

Novaris SDH High Voltage Surge Diverters have been engineered for system voltages above 600VRMS. Typical applications include aviation runway lighting, mining and railway industries.



		SDH-100-550	SDH-200-1000	SDH-100-1500	SDH-100-2000
Electrical Specifications					
Connection type		Shunt			
Modes of protection		L-PE			
Phases		1			
Maximum continuous voltage	U_c	550V	1000V	1500V	2000V
Maximum discharge current (8/20 μ s)	I_{max}	100kA	200kA	100kA	
Voltage protection level @ 3kA (8/20 μ s)	U_p	1.6kV	2.6kV	3.8kV	4.8kV
Response time	t_A	<5ns			
Mechanical Specifications					
Operating temperature / humidity		-40 to +70°C / 5 to 95% non-condensing			
Terminal capacity		25mm ²			
Terminal screw torque		2.5Nm			
Environmental		IP 20			
Mounting		See mounting options below			
Enclosure / colour		ABS, ceramic / Blue			
Weight		2.0kg			
Dimensions					
Width		57mm			
Height		214mm			
Depth		162mm			
Options [*]					
GEC RSL63H mounting		H			
GEC RSL63P mounting		P			
GEC RSL63PH mounting		PH			
External alarm		A			
External alarm / Thermal disconnect		T			

Standards Compliance
IEC 61643-11 class I
AS/NZS 1768 category C
IEEE C62.41 category C