

Super slim and stylish design with multi combination for a better match with the latest environment trends.



FULL-COLOR  
**WIDE** C-TYPE  
SERIES

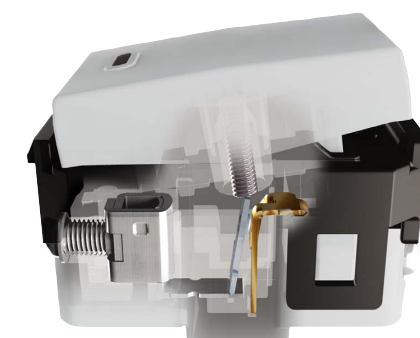
## CUTTING EDGE DESIGN



Round plate design and various color base ( Standard, metallic and pastel tone ) creating new interior design ideas.

## TROUBLE-FREE SWITCHING MECHANISM

Advanced combination of high-conductivity heat-resistant copper, coil spring and outstanding resistant silver alloy contacts.



## HIGHLY RELIABLE SAFETY FEATURES

- European RoHS directive compliant, completely free from Cd, Hg, Cr6+, Pb, PBBs, PBDEs.
- Fire retardant material in use to prevent core components from burning.

Safety

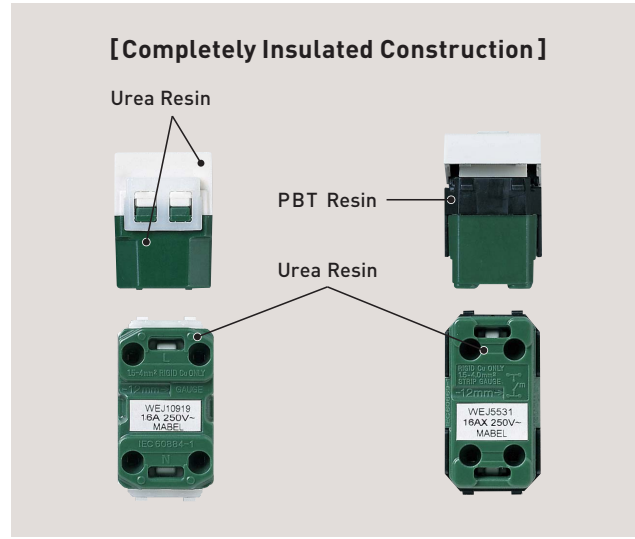
Conforming to The IEC Standards

Switches conform to the IEC60669-1 standard (16A 250V~), while socket outlets conform to the IEC 60884-1 standard. Besides assuring protection against electric shock, all devices are designed for long service life and safety.

Protection Against Electric Shock  
→ Completely Insulated Construction

Enclosure Material Characteristics (reference)

|                      | Urea      | PBT  | Polycarbonate |
|----------------------|-----------|------|---------------|
| Heat Deformation     | Good      | Good | Fair          |
| Tracking Performance | Excellent | Good | Poor          |
| Self-Extinguishment  | Good      | Good | Good          |

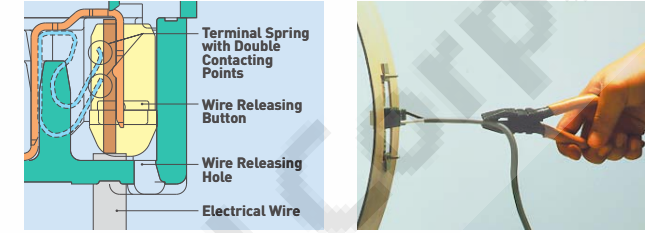


Technology

Perfect Connection with the Global Terminal



The global terminal's quick connect construction enables extremely easy installation. To connect either solid or stranded wires, simply insert them into the global terminal. Once inserted, the internal mechanism secures them more firmly than screws to prevent them becoming unfastened or loose, for stable, high-quality connection at all times.



| FULL-COLOR WIDE SERIES (Global Terminal) |   |                  |
|--|---|------------------|
| Solid Wires                              | 1.5 mm <sup>2</sup> ~4.0 mm <sup>2</sup><br>15AWG-12AWG | Solid Wire OK    |
| Stranded Wires                           | 1.5 mm <sup>2</sup> ~4.0 mm <sup>2</sup><br>15AWG-12AWG | Stranded Wire OK |

\*Rigid cooper wire only.  
\*1mm<sup>2</sup> solid wire can be used at only less than 6A.

Tensile Strength after Connection

| FULL-COLOR WIDE SERIES               |  |                  |
|--------------------------------------|--|------------------|
| IEC60669-1 IEC60884-1 Standard Value | Wire                                     | Strength         |
| IEC Standard                         | Wire                                     | Strength         |
| 30N min.                             | 1.5mm <sup>2</sup><br>4.0mm <sup>2</sup> | 30N min. or more |

Switches

- Designed for long service life (Compliant with the IEC Standard) with 40,000 operations at 16A 250V ~ full rating.
- Heat-resistant, highly conductive material used for the terminal plate reduces temperature increases in the terminal section.

Terminal Section Temperature Rise

| IEC60669-1 Standard Value |          |             |
|---------------------------|----------|-------------|
| Initial                   | 45K max. | 20A current |
| After 40,000 operations   |          | 16A current |

Terminal Section Temperature Rise

| IEC60884-1 Standard Value |          |             |
|---------------------------|----------|-------------|
| Initial                   | 45K max. | 22A current |
| After 10,000 strokes      |          | 16A current |

Withdrawal Forces

| IEC60884-1 Standard Value |            |          |
|---------------------------|------------|----------|
| After 10,000 strokes      | 3 pins     | 54N max. |
|                           | 2 pins     | 50N max. |
|                           | Single pin | 2N min.  |



Socket Outlets

- Widening of the socket outlets secures insulation distance between contacts and external metal parts, thereby improving safety. (Compliant with IEC standard which requires insulation distance over 4.5 mm)
- Long-life design, capable of 10,000 strokes at 16A 250V~ full rating.
- Heat-resistant, highly conductive material is used for the blade sockets and terminal sections to reduce temperature rises.

Insulation Resistance

| IEC60884-1 Standard Value |           |  |
|---------------------------|-----------|--|
| Initial                   | 5M Ω min. |  |
| After 10,000 strokes      |           |  |

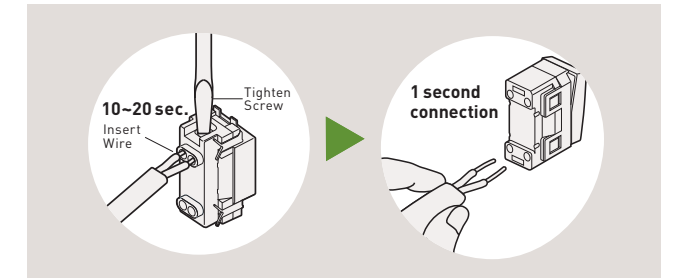
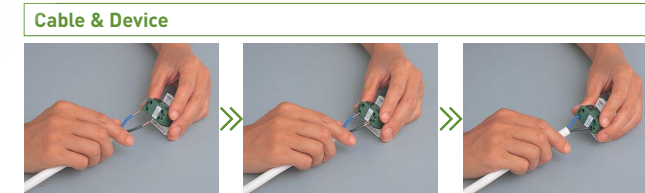
Electric Strength

| IEC60884-1 Standard Value |               |  |
|---------------------------|---------------|--|
| Initial                   | 2,000V 1 min. |  |
| After 10,000 strokes      | 1,500V 1 min. |  |



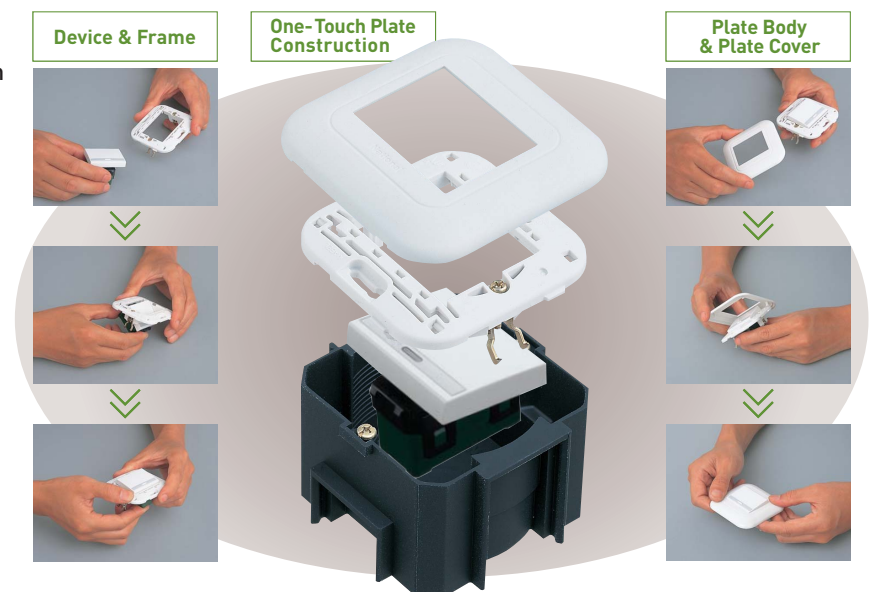
Superior safety and ease of installation are achieved using the global terminal construction.

- Since wiring only requires simple insertion of the wire into the switch, installation is assured with uniform wire connection quality.
- This terminal can be used with a wide range of wire sizes (1.5 mm<sup>2</sup> - 4.0 mm<sup>2</sup>, switch and socket outlets). (Compliant with IEC standard which requires 1.5 mm<sup>2</sup> - 4.0 mm<sup>2</sup> of solid and stranded wires)
- The construction does not expose power source terminals, and this design works to prevent electrical shock while electricity is flowing.



Easy One - Touch Installation

Thanks to the All One-Touch Action design concept, attaching devices to frame, and frames to plate covers is easier than ever. This lets you enjoy a dramatic cut in installation time and labor costs.



FULL-COLOR WIDE SERIES C-TYPE

FULL-COLOR WIDE SERIES for HOTEL

WEATHER PROOF COVER/ DOOR CHIME

MULTI GANG PLATE

FULL-COLOR WIDE SERIES C-TYPE

FULL-COLOR WIDE SERIES for HOTEL

WEATHER PROOF COVER/ DOOR CHIME

MULTI GANG PLATE

FULL-COLOR WIDE SERIES Metallic LINE UP

# Metallic

- Champagne Silver (MYX)
- Gold (MYZ)
- Blue (MDZ)
- Dark Brown (MAE)
- Wine Red (MRE)



**WEJ5532** [MYX]-8 Switch "C" 3Way 16AX 250V  
**WEJ5542** [MYZ]-8 Switch "C" 3Way 16AX 250V  
**WEJ5572** [MDZ]-8 Illuminated Switch "C" 3Way 16AX 250V (Indicator Lamp:220V)  
**WEJ5582** [MAE]-8 Illuminated Switch "C" 3Way 16AX 250V (Indicator Lamp:220V)

[MYX] [MYZ] [MDZ] [MAE] [MRE]  
 The last three character in  of Metallic product numbers show the item color.



**WEJP1121** [MYX]-78 Tamper-Proof Round Pin Socket Outlet with Grounding (CP) with Plate 16A 250V  
**WEJP11212** [MYZ]-78 Tamper-Proof Round Pin Socket Outlet with Grounding (CP) with Plate 2-Gang 16A 250V  
**WEJP11222** [MDZ]-78 Tamper-Proof Round Pin Duplex Socket Outlet with Grounding (CP) with Plate 16A 250V

[MYX] [MYZ] [MDZ] [MAE] [MRE]  
 The last three character in  of Metallic product numbers show the item color.



**WEJ78019** [MDZ]-8 Plate 1-Gang 1-Device  
**WEJ78029** [MAE]-8 Plate 1-Gang 2-Device  
**WEJ78049** [MRE]-8 Plate 2-Gang 4-Device



**WEJ7823** [MDZ]-8 Plate 3-Gang for Socket Outlet  
**WEJ30029** [MDZ]-8 Decorative Cover with Frame

[MYX] [MYZ] [MDZ] [MAE] [MRE]  
 The last three character in  of Metallic product numbers show the item color.



**WEJ57518H-8** Dimmer Switch (Incandescent Light Control) 800W 220V  
**WEJ57515H-8** Dimmer Switch (Incandescent Light Control) 500W 220V  
**WEJ10919H-8** Universal Socket Outlet 16A 250V  
**WEJ1121H-78** Tamper-Proof Round Pin Socket Outlet with Grounding (CP) 16A 250V  
**WEJ5401H-78** Push Button "B" Single Pole 10AX 250V



**WEJ2164H-8** Telephone Modular Jack (6P4C)  
**WEJ2166H-8** Telephone Modular Jack (6P6C)  
**WEJ2488H-8** CAT 5E Data Modular Jack (8P8C)  
**WEJ24886H-8** CAT 6 Data Modular Jack (8P8C)  
**WEJ2501H-8** DIN Type Television Terminal  
**WEJ3020H-8** Blank Chip

These products for metallic type plate.

FULL-COLOR WIDE SERIES

# Pastel

- Blue (TL)
- Green (TG)



**WEJ5532-8** Switch "C" 3Way 16AX 250V  
**WEJ5542-8** Switch "C" 3Way 16AX 250V

These products for Pastel and Standard type plate.

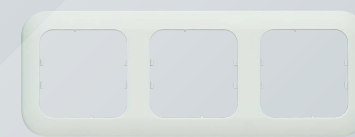


**WEJP1121** [TL]-78 Tamper-Proof Round Pin Socket Outlet with Grounding (CP) with Plate 16A 250V  
**WEJP11212** [TG]-78 Tamper-Proof Round Pin Socket Outlet with Grounding (CP) with Plate 2-Gang 16A 250V

[TL] [TG] [TN] [F]  
 The last two character in  of Pastel product numbers show the item color.



**WEJ78019** [TN]-8 Plate 1-Gang 1-Device  
**WEJ78029** [F]-8 Plate 1-Gang 2-Device



**WEJ7823** [TG]-8 Plate 3-Gang for Socket Outlet  
**WEJ30029** [TG]-8 Decorative Cover with Frame

[TL] [TG] [TN] [F]  
 The last two character in  of Pastel product numbers show the item color.



**WEJ57518-8** Dimmer Switch (Incandescent Light Control) 800W 220V  
**WEJ57515-8** Dimmer Switch (Incandescent Light Control) 500W 220V

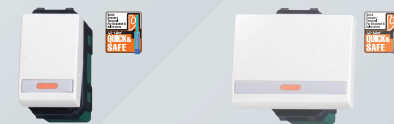


**WEJ24886-8** CAT 6 Data Modular Jack (8P8C)  
**WEJ2501-8** DIN Type Television Terminal

These products for Pastel and Standard type plate.

Pastel LINE UP

- Pink (TN)
- Cream (F)



**WEJ5572-8** Illuminated Switch "C" 3Way 16AX 250V (Indicator Lamp:220V)  
**WEJ5582-8** Illuminated Switch "C" 3Way 16AX 250V (Indicator Lamp:220V)



**WEJP11222** [TG]-78 Tamper-Proof Round Pin Duplex Socket Outlet with Grounding (CP) with Plate 16A 250V



**WEJ78049** [TL]-8 Plate 2-Gang 4-Device



**WEJ30029** [TG]-8 Decorative Cover with Frame



**WEJ10919-8** Universal Socket Outlet 16A 250V  
**WEJ1121-78** Tamper-Proof Round Pin Socket Outlet with Grounding (CP) 16A 250V



**WEJ3020-8** Blank Chip  
**WEJ5401-78** Push Button "B" Single Pole 10AX 250V

These products for Pastel and Standard type plate.

FULL-COLOR WIDE SERIES Standard LINE UP

# Standard

- White



**WEJ5441-8** Switch "B" Single Pole 16AX 250V  
**WEJ5531-8** Switch "B" Single Pole 16AX 250V  
**WEJ5581-8** Illuminated Switch "B" Single Pole 16AX 250V (Indicator Lamp:220V)  
**WEJ5571-8** Illuminated Switch "B" Single Pole 16AX 250V (Indicator Lamp:220V)



**WEJP1121-78** Tamper-Proof Round Pin Socket Outlet with Grounding (CP) with Plate 16A 250V

[MYX] [MYZ] [MDZ] [MAE] [MRE]  
 The last three character in  of Metallic product numbers show the item color.



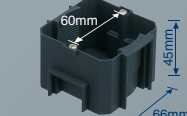
**WEJ78019W** Plate 1-Gang 1-Device



**WEJ7823W-8** Plate 3-Gang for Socket Outlet



**WEJ2164-8** Telephone Modular Jack (6P4C)  
**WEJ2166-8** Telephone Modular Jack (6P6C)



**WEJ5911-8** Flash Wall Box

These products for Pastel and Standard type plate.



**WEJP11212-78** Tamper-Proof Round Pin Socket Outlet with Grounding (CP) with Plate 2-Gang 16A 250V

[MYX] [MYZ] [MDZ] [MAE] [MRE]  
 The last three character in  of Metallic product numbers show the item color.



**WEJ78029W-8** Plate 1-Gang 2-Device



**WEJ30029W-8** Decorative Cover with Frame



**WEJ2488-8** CAT 5E Data Modular Jack (8P8C)



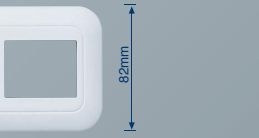
**EGG331-8** Weather Proof Push Button for Door Chime 1A 220V

These products for Pastel and Standard type plate.



**WEJP11222-78** Tamper-Proof Round Pin Duplex Socket Outlet with Grounding (CP) with Plate 16A 250V

[MYX] [MYZ] [MDZ] [MAE] [MRE]  
 The last three character in  of Metallic product numbers show the item color.



**WEJ78049W-8** Plate 2-Gang 4-Device



**WEJ89911-8** Weather Proof Cover Plate IP54



**WBJ1214W-38** Socket Outlet 1-Gang DP Switch with Indicator with Plug 13A 250V Applicable Box : BS-TYPE  
**WBJ1214W-8** Socket Outlet 1-Gang DP Switch with Indicator 13A 250V Applicable Box : BS-TYPE



**EBG888-8** Door Chime 220V Two-Tone Easy-To-Hear 82dB Chime

These products for Pastel and Standard type plate.

FULL-COLOR WIDE SERIES C-TYPE

FULL-COLOR WIDE SERIES for HOTEL

WEATHER PROOF COVER/ DOOR CHIME

MULTI GANG PLATE

FULL-COLOR WIDE SERIES C-TYPE

FULL-COLOR WIDE SERIES for HOTEL

WEATHER PROOF COVER/ DOOR CHIME

MULTI GANG PLATE